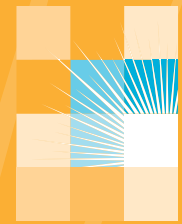


# 2010-2011



CRISTO REY  
JESUIT HIGH SCHOOL



DELIVERING ON OUR PROMISE

ANNUAL REPORT

MISSION: TO PROVIDE AN EDUCATION IN THE JESUIT TRADITION, WHICH INTEGRATES COLLEGE PREPARATORY ACADEMIC AND PROFESSIONAL WORK ENVIRONMENTS THEREBY PREPARING STUDENTS FROM UNDER-RESOURCED FAMILIES FOR SUCCESS IN COLLEGE AND LIFE.



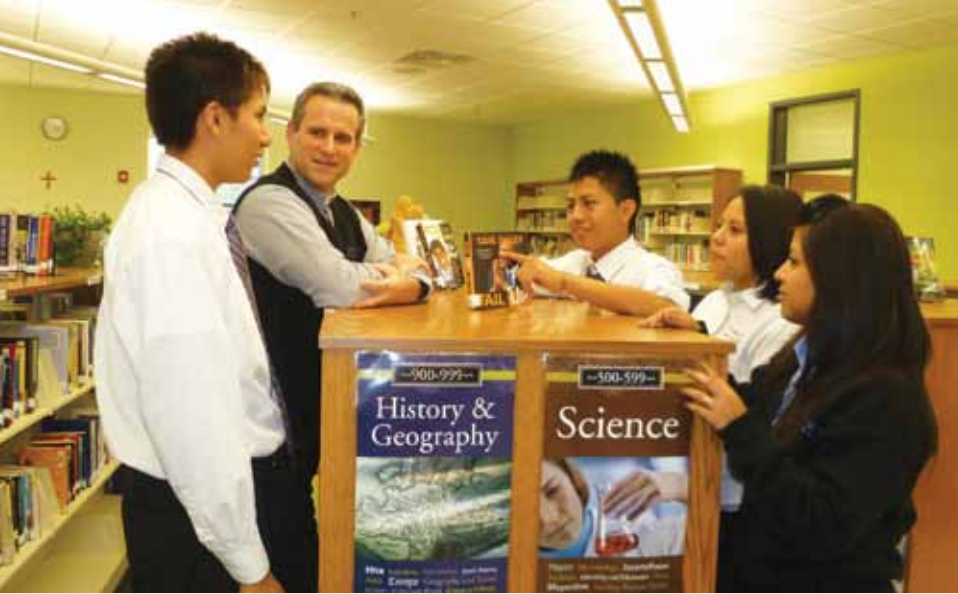
### Table of Contents

From the President, Fr. Tim Manatt, S.J. ....3  
 From the Principal, Jeb Myers .....4  
 Student Spotlight .....5  
 Hire4Ed Work-study Program .....6  
 Supporting Our Graduates .....8  
 Teacher Spotlight .....9  
 Supporters .....10  
 Financials .....14



### 2010-2011 STUDENT DEMOGRAPHIC PROFILE

Ethnicity	% of Total	City of Origin	% of Total
Latino/ Hispanic	65%	Minneapolis	71%
Black/ African American	21%	Southern suburbs	14%
Multi-racial	7%	Northern suburbs	9%
White	3%	St. Paul/ Eastern suburbs	5%
Asian/ Pacific Islander	2%	Western suburbs	1%
Other	1%		
American Indian/ Alaskan Native	1%		



## WE'VE COME A LONG WAY . . . AND WE HAVE MORE WORK TO DO.

**In 2007, we promised prospective 9th graders, their parents, and community leaders that we would deliver a high school that helps students from under-resourced families to achieve academic, workplace and social success. We have made enormous progress toward delivering on that promise.**

On June 11, 2011 we celebrated our first graduation. One hundred percent were accepted to college or the military. Watching our graduates walk across the stage and receive their diplomas was a shining moment for all of us, actualizing the labors of love of so many: students, parents, faculty, staff, trustees, benefactors and supporters. But this is just a start of what we can do. We continue to identify additional needs of our current students and graduates so that we can deliver even more.

First, I have taken a lead role in helping our graduates beat the odds and graduate from college in five years. We will soon add a graduate support coordinator position to create a support network on various college campuses. Second, to keep our current students more engaged, we have grown extra-curricular activities, inter-scholastic athletics, drama and journalism.

I am also excited to report that enrollment is increasing—for the first time, in August we broke the century mark for freshmen with 103. And our cost per student has decreased significantly over four years—by more than 45% thanks to the steady increase in enrollment, the number of Hire4Ed companies, and the expansion of jobs for our students within individual companies. Student wages, together with family contributions, fund nearly half of the cost of education, the rest coming from the generosity of our donor partners.

We could not have come this far without your self-sacrificing efforts and faith in our school and its mission. With your continued help and passion, we will only get better. As current student-government vice-president, Paige Anthony '12, said in her election speech, "Cristo Rey is tough, but it's a treasure." Thank you for your part in guiding our students to the ultimate treasure, college graduation!

**Fr. Tim Manatt, S.J.**

President



## A Unique Academic Experience

All schools work hard to make students successful in academics and extra-curricular activities. Success in one area strengthens students' self-esteem, spurring them on to triumph in others. At Cristo Rey Jesuit High School, we improve the percentages of success.

Our small community is supportive, rigorous and challenging. Along with math and history, our students learn the value of trusting others, seeking support and working hard.

So important to our success is our faculty, our Hire4ed corporate work-study program, and our students themselves.

Our teachers have a strong sense of mission that drives them to work long hours, prepare well organized lessons and consistently monitor student's learning progress. They work hard to personalize lessons for each student to ensure success.

Through Hire4Ed, our students work at real corporate jobs where they are mentored by dedicated supervisors in a respectful work culture and make contributions to a real bottom line. Achievement in the workplace helps students overcome struggles in school, because they discover a newfound belief in themselves.

This year, we celebrated with great pride and some tears the success of our first graduating class; 100 percent were accepted to college or the military. This accomplishment is a great testament to the heart and hard work of our students and the supportive Cristo Rey Jesuit H.S. community.

### Jeb Myers

Principal

## BY THE NUMBERS: MOST SIGNIFICANT ACHIEVEMENTS OF 2010-2011

**61**: Number of seniors in our first graduating class

**100**: Percent of graduates accepted to college or the military

**94**: Percent of students retained between August 2010 and June 2011, our best school year to date

**96**: Percent of students who successfully demonstrated standards in order to be promoted to the next level

**98**: Our best daily student attendance rate

## MY TEACHERS MADE MY DREAM COME TRUE.

Stephanie Bielmas was in jeopardy of not graduating in June 2010. Rather than having to repeat the year, Stephanie's teachers worked with her to develop a plan that would help her successfully fulfill the requirements for graduation. Stephanie graduated with her class. In a letter to her teachers, she pays tribute to them.



To my Cristo Rey teachers:

.....You have made my dream and my family's dream come true. If it wasn't for all of you, I would not be here. I owe my diploma to you...If it weren't for you, I would have had to come back next year. I want to thank you from my heart, for pushing and pulling along with me and not giving up on me .....You are the best teachers ever...you guys should get an award, too, because we couldn't have done it without you.

— Stephanie Bielmas '11



## COLLEGE PREP AT GEORGETOWN

Senior Dana Fernández has applied to nine colleges – but her first choice is Georgetown.

Spending three weeks on the Georgetown campus last summer played a big part in her decision. Dana was one of 40 students across the Cristo Rey and KIPP (Knowledge Is Power Program) national networks to attend Georgetown's pre-college summer program. The program prepares the students for the college experience through mentoring, college coursework, and workshops on the application process, and university life.

"Georgetown was awesome," says Dana, who sat in on lectures and listened to student panels speak on the application process and also life on campus.

Anticipating her visit to Georgetown was not without some worry, however. Dana's biggest fear was leaving her family – in particular her mom and younger siblings. "My mom helped me realize that sometimes you have to make sacrifices to get ahead," she says.

Dana also worried about how she should act, what she would say and whether she would be the only Hispanic in the program. "When I got there, that was totally not the case," she says. "People were from all over and everybody was so nice. My favorite part about Georgetown was being able to interact with other students who have the same goal as me, of going above and beyond."

Dana and the friends she met from other Cristo Rey schools created a special Facebook page to keep in touch with each other after completing the program. She also wants to set an example for her brother and sister.

"Going to Georgetown motivated me so much," she says. "I began working on my application as soon as I got back and I've already started looking for scholarships. I realize that if I do get this scholarship and go to college, it's going to help me and my family."



## Hire4Ed: So much more than a job.

All of our students participate in our work-study program, Hire4Ed, sharing a full-time job in a professional work environment, typically with three other students.

This experience is a motivating factor to help our "at-risk youth" not only gain valuable skills, but also underwrite more than 50% of the cost of their education. Students work side by side with caring adults, building strong work ethics and developing a vision for their future.

Our Hire4Ed companies and organizations benefit from hiring our students. In addition to getting well-trained, entry-level employees, they meet their future workforce, support corporate social responsibility and diversity goals.

At the end of the 2010-2011 school year, 98% of Hire4Ed companies evaluated the work our students performed as "excellent or satisfactory".



The Hire4Ed Program helps students build self-esteem and learn how to succeed in the professional world. It also allows us to increase our enrollment. For every additional full-time job, we can accept four new students.

**Meg Brudney**

Executive Director, Hire4Ed

## KEMPS & HIRE4ED: A WIN-WIN PROGRAM



In 2010, Kemps joined the Hire4Ed program. Suzy St. Albins, Kemp's mailroom supervisor, didn't know what to expect when sophomore, Angel Tapia, began his first day of work.

"It didn't take long for me to see that Angel came to do his absolute best. And it never changed," says St. Albins. "Every Tuesday, he stepped up to the plate – a true professional who always went beyond what we asked of him."

So much so, that Kemps nominated – and Angel was selected – as Cristo Rey Jesuit High School employee of the month for his contributions at Kemps. "He so deserved it," says St. Albins. "We got so much more work done when Angel was there. To this day, he is the fastest, most accurate scanner in the department. And he would catch errors no one else did."

St. Albins says Hire4Ed is a win-win for students and companies. "Students get to learn what working is and the companies get to experience these wonderful young people," she says. "If I had my own company, I would definitely employ Hire4Ed students from Cristo Rey Jesuit High School."

## STUDENTS WORKED IN 80 COMPANIES AND ORGANIZATIONS THROUGHOUT THE TWIN CITIES.

Collectively, students earned \$1.2 million— 50% of their total education costs. But Hire4Ed is much more than a way for students to help pay their tuition. The experience of working in corporate settings help young people set new and higher expectations for themselves. THANK YOU Hire4Ed companies and supervisors for all you do for our students and Cristo Rey Jesuit High School.

### AUTOMOTIVE

Advance Auto Parts  
Luther Automotive Group  
Customer Care Center  
Luther Automotive Group  
Motors Management  
Corporation

### BANKING/FINANCE

AgMotion  
BMO Financial Group  
(formerly M&I Bank)  
Dougherty Financial Group  
LarsonAllen LLP  
Lazard Middle Market LLP  
PwC, LLP  
US Bank



Wells Fargo Bank, NA  
Wells Fargo Securities, LLC  
Wells Fargo Home  
Mortgage  
Wipfli LLP

### CONSTRUCTION

Ryan Companies US, Inc.

### CONSUMER GOODS

General Mills  
Kemps, LLC  
SuperValu Distribution  
Center

### EDUCATION

Capella University  
Cristo Rey Jesuit High  
School – Twin Cities  
Joyce Preschool  
North Central University  
Risen Christ  
Elementary School  
Search Institute  
University of Minnesota –  
Academic Health Center

University of St. Thomas –  
Opus College of Business  
University of St. Thomas –  
School of Law

### ENERGY

Xcel Energy

### HEALTHCARE

Allina Hospitals & Clinics  
Children's Hospitals and  
Clinics of Minnesota  
Medtronic, Inc.  
OptumHealthcare  
Solutions

The Breast Center of  
Suburban Imaging

UnitedHealthcare  
Community & State

UnitedHealthcare

### HOSPITALITY INDUSTRY

Hilton Bloomington  
Minneapolis, The Marcus  
Corporation

### HUMAN RESOURCES

Ceridian Corporation

### LAW

Dorsey & Whitney LLP  
Gray Plant Mooty  
Hennepin County Fourth  
Judicial District

Leonard Street and  
Deinard, P.A.

Lindquist & Venum  
PLLP

Oppenheimer Wolff &  
Donnelly LLP

Robins, Kaplan, Miller &  
Ciresi LLP

### MANUFACTURING

LeJeune Steel Co.

Tennant Co.

Valspar Corporation

### MEDIA/PRINTING

Hubbard Broadcasting  
Inc.

Japs-Olson Company

KFAI, Fresh Air, Inc.

Merrill Corporation

Thomson Reuters

### MISCELLANEOUS

Minnesota Army  
National Guard

### NONPROFIT

Cabrini Partnership

Casa Guadalupana

Catholic Charities of  
St. Paul & Minneapolis

Comunidades Latinas  
Unidas En Servicio

Epilepsy Foundation

Friends of the Orphans

Holy Rosary/Santo  
Rosario Catholic Church

Minnesota WorkForce  
Center

Northern Star Council,  
Boy Scouts of America

Open Arms of Minnesota

Pohlad Family Foundation

Project For Pride In Living

The Basilica of Saint Mary



The Church of Saint Odilla  
Urban Ventures Leadership  
Foundation  
Volunteers of America Park  
Elder Center  
Youth Frontiers, Inc.

### OFFICE INTERIORS

Omni Workspace

### PROFESSIONAL SERVICES

SALO /Oberon/  
NumberWorks

### REAL ESTATE

Brookfield Properties  
Corp.

### RETAIL

Best Buy Corporate

### SCIENTIFIC RESEARCH

Pace Analytical

### TECHNOLOGY

Lawson Software, Inc.  
Geek Squad – Roseville  
SPS Commerce

### TRANSPORTATION

C.H. Robinson  
Worldwide, Inc.  
Minneapolis & Suburban  
Bus Company, Inc.

# Supporting Our Graduates

June 9, 2011: Our proudest moment as a community. Graduates processed into the gym at the Colin Powell Youth Leadership Center to thunderous applause. Four years ago these students accepted the challenge to become a member of our inaugural class. Senior year was nine months of pure excitement and anxiety as one by one, our 61 seniors were accepted into college or the military. Today, they are enrolled in colleges from South Carolina to California, New Mexico to North Dakota. Our commitment to these alumni is ongoing as we support them in their efforts to earn a college degree.

**Micki O'Flynn**  
College Counselor



## FRIENDS FOR LIFE

Searching for the right college can be stressful for any senior. But when a Cristo Rey Jesuit High School board member like Colleen Ryan lends a hand, the experience can turn into an acceptance to a great school and lasting friendship.

Seniors Catherine Alcantara and Laura Early had never heard of St. Mary's College of Indiana, sister school to the University of Notre Dame. Ryan, however, knew St. Mary's well – three of her daughters attended the college and Ryan received an honorary doctorate degree from the school in 2008. Because of its small community and nurturing Catholic environment, Ryan felt it would be a great place for Cristo Rey Jesuit H.S. young women.

Catherine says Cristo Rey Jesuit H.S.'s college counselor had also recommended St. Mary's. "The next thing I knew, Mrs. Ryan and I were flying to visit the school."

Catherine had expected to find the school boring but enjoyed the classes she attended. "Mrs. Ryan opened my mind and is one of the main reasons I am here today," she says. "She also reminded me she would always be there for me if I needed to talk."

Laura traveled to St. Mary's on her own, with funding and keen interest from Ryan. After beginning her freshman year at St. Mary's, Ryan paid Laura a visit.

"Mrs. Ryan took me to a big event on campus and introduced me to some important people who give me support," says Laura. "She also helped redecorate and furnish my dorm room. Now we email, we write, we text. She just really cares."

Ryan feels that being associated with Cristo Rey Jesuit H.S. can open up doors for the students. "It was much more of a gift for me to help Laura and Catherine, than a gift for them. It's so wonderful to see them blossoming there."



# Teachers at the Top of Their Class

Our educators are dedicated, experienced, passionate and hard working. They believe in the power of quality education, and have graduated from fine colleges and universities across the map, from the University of Minnesota to Manhattan College, from Winona State to Western Washington, from Bemidji State to Boston College, from Hamline to Harvard. They also have a combined 95 years of post-graduate education and have earned or are earning 34 post-graduate degrees. Our teachers have taught, studied and served all around the world, including Africa, Europe, Latin America and Asia, as well as all over the United States. Each believes in the mission of Cristo Rey Jesuit High School, especially in preparing under-resourced families for success in college and in life.



## DON BEACH – THE STUDENTS KEEP US TEACHING

**Throughout his storied 48-year teaching career, Don Beach has taught just about every subject in every type of school. But it's his experience as one of the original faculty members at Cristo Rey Jesuit High School that has possibly been the most rewarding.**

"What drew me to Cristo Rey was its mission," says Beach, who teaches geometry and pre-calculus. "Helping under-resourced students realize that they still have the capabilities to go beyond what society tells them, that's what appealed to me. These kids are used to being told they can't go to college."

Beach is reminded of a young student from his freshmen advisory group whose goal was to be a mechanic someday. "The next year, this boy told me, 'Nope, I don't want to be a mechanic anymore, Mr. Beach. I want to run the business,'" he recalls.

It's witnessing that kind of evolution in his students that Beach says keeps teachers teaching.

"As a teacher, when you witness the 'a-ha' moment where they suddenly get it, that's what makes it all worthwhile," he says.

From the school's first dance to its first graduates to the first acceptance letters into various colleges, witnessing these firsts signifies a certain level of success to Beach. "It's hard to measure success but when you compare where their parents have come from, and how these kids did as freshmen and now they're freshmen in college, I see lots of success," he says.

After 48 years, however, Beach is not quite ready to call it quits just yet. "It's been a fantastic trip and when I do retire it will be from here," he says. "I can't envision a better place to hang up my chalk."



When you give of your time or treasure, you want to see results. For those of you who have been with us since the beginning...and those who recently got involved....we saw the fruits of your giving pay off—the Class of 2011 Cristo Rey Jesuit High School. We know you are as proud as we are of these students and what they have achieved. You were a vital part of their graduation and their ultimate success in college.

We need your continued partnership for future graduating classes. Our students work hard to earn half the cost of their education, but they can only do it when our donors meet them halfway. And thankfully, we have an ever-increasing number of people who believe in our school and want to help in any way they can. This year we added 188 new donors, and we hope to add many more individuals, foundations and corporations who believe in Cristo Rey Jesuit High School and our students.

Thank you for all you have done to help build bright futures for our students. We hope you will continue to be part of this phenomenal journey and help us spread the word about Cristo Rey Jesuit H.S. You make dreams become reality.

## Bob Elfstrand

Director of Development

## DONORS

### Individuals and Families

#### \$25,000+

Anonymous (2)  
Nanette and John Ballbach  
Jane McDonald Black and Archie Black  
Michael and Kathleen Dougherty  
Darren and Terry Jackson  
Dick and Robin Kelly  
Al and Mary Agnes McQuinn  
Joe and Mary Mulvehill  
Robert and Rebecca Pohlad  
Patrick and Ann Ryan  
Gary and Pat Sauer  
Hank and Chris Shea  
Warren and Mary Lynn Staley

#### \$10,000 - \$24,999

Anonymous  
Laura Bohlander  
Edward and Karayn Cunningham  
Wayne Dirkman  
Timothy and Mary Gray  
Jack and Kate Helms  
Larry and Jean LeJeune  
Betty Lucas  
Stephen and Colleen Lucke  
Brian and Shelly Murray  
John J. Murray  
Elizabeth Page  
Robert Page  
Joan and Bill Slattery  
Dr. Tim and Mary Beth Trine  
Donna Welsh

#### \$5,000 - \$9,999

Terry and Laura Becker  
Mary Ann and Harry Debes  
Thomas Dolphin

Mary and Ernest Dorn  
Mike and Debbie Ducar  
Tim and Ann Fleming  
Michael and Marie Gallagher  
Tim Holmberg  
Thomas and Alice Kullman  
John and Jane McNeill  
Girard Miller  
Scott and Michelle Torborg

#### \$1,000 - \$4,999

Anonymous  
Gloria and George Allen  
Dave and Mary Jo Bangasser  
Vicki and Tim Barzen  
Joseph and Helen Bettendorf  
William Bieber  
Deborah Schlichting and Charlie Blomme  
Terry and Karen Bonertz  
Amanda and Chase Boswell  
Robert and Rhonda Boswell  
Robert and Lucille Bray  
Meg and Jim Brudney  
Christine and Jay Brunkhorst  
John and Kathleen Cleveland  
Daniel and Roseanne Collins  
Joseph Claus and Martha Conway  
Jeffrey Cotton  
Thomas and Katherine Coulter  
Dave and Katie Dorn  
Daniel H. Dunn, M.D.  
Robert and Elizabeth Elfstrand  
David and Helen Fitzgerald  
John and Sheila Folkestad  
Bill and Barbara Gabler  
Charles and Arlene Garrity  
Daniel and Karen Garrity  
Robert and Charlotte Gavin  
Kevin and Patricia Gilligan

David and Paula Graff  
David Graves  
John and Theresa Griep  
Jerome and Elvira Grundmayer  
Robert Hand  
Lyth and Mary Hartz  
Carey Hastings  
Jim and Anita Hidding  
William Kane, MD, Ph.D.  
Mark and Tami Kozikowski  
Dean Laurance  
Tom and Sheila Letscher  
Robert Loonan  
Brian and Susan Mark  
Michael and Mary Kate McFadden  
Richard and Joyce McFarland  
Katherine McKenzie  
Cynthia McNulty Coughlin  
William and Chouhei Mullin  
Cary and Regina Musech  
James and Marjorie O'Hara  
Tish and Richard Osborn  
Robert and Michaeline Pajor  
Benjamin Peyton  
David and Karen Quinby  
Mary Ann and Jack Remick  
Gerald and Katherine Roehl  
Colin Ryan  
Colleen Ryan  
Courtney Ryan  
Michael and Leah Ryan  
Samuel and Cecilia Salas  
Scott and Stephanie Sample  
Scott and Ellen Sayer  
Merlyn and Bernadine Scroggins  
Nancy and Jeff Selleck  
Jim and Cindy Shingler  
Brian and Kathy Short

Mariah Snyder  
Storrow Sommer  
Peter and Janet Spokes  
Mary Streitz  
Ann and Taige Thornton  
John Watkins  
Stephen and Amy Wehr  
Sunny Wicka  
Peter and Michelle Wilhoit

#### \$500 - \$999

Robert and Kathleen Azman  
Lars and Marilyn Bakken  
Jack and Joan Barrett  
Lisa Becchetti  
John and Patricia Belian  
Johanna Bell  
Julian and Mary Jean Bilski  
Patricia and Dick Brooks  
Jeff and Mary Carson  
Molly and Michael Carson  
Nathan and Barbara Collins  
Lucia and Stoddard Crane  
Dianne Elfstrand  
Randall and Kristina Fielding  
Mark and Teresa Fleischhacker  
Dean and Amy Franke  
Maggie Lockner Franke and Matt Franke  
Bill and Christine Griffith  
Dr. Joseph and Kathryn Hamel  
John and Joanne Haurykiewicz  
Robert and Carmela Hobbins  
Colleen and John Hooley  
Eric and Heidi Hough  
James and Mary Ellen Jordan  
John and Paula Kelly  
Tadd Kelly

**DONORS \$500 - \$999 (cont'd)**

Carol Kosiek  
Mike and Karlene Lindseth  
Anne Lockner Bernat  
Michelle Manatt  
Thomas and Susan McGuire  
Pat and Toni McHale  
Conrad and Helen Miller  
James Moynihan  
John and Eileen Mullen  
Joanne Nalepka  
Patrick and Melissa Nault  
Timothy and Dana O'Connor  
Richard and Nancy Perrine  
Larry and Judith Pfaff  
Michelle and Tim Pollis  
Herbert and Cyrilla Royce  
Roy Rueb  
Ella Spanjers  
Bev and Lawrence Stirtz  
Theresa Sullivan  
Kenneth Swanson  
Mary Weimer  
Charles and Andrea Wendt

**To \$499**

Anonymous (2)  
Chris Knoedler and Ellen  
Abeln, MD  
Wilson and Theresa  
Acevedo  
Barbara Ahlstrom  
Theodore and Mary Albrecht  
Patrick and Mary Alexander  
Peter and Angela Amann  
Timothy Anderson  
Jim and Florence Andre  
Arnold Angeloni  
Janet Bailey  
William and Beverly Bailey  
Barbara Baker  
Margaret King and James  
Bangert  
Dennis and Jerrice Barrett  
Rosemary Barry  
Thomas Barry  
Leo and Lenora Beauregard  
Bridget Berg  
Martha Bishop  
Kathy and John Boone  
William Bowler  
Arthur Boylan  
Dwain and Barbara Breitbach  
Lorraine Breitenbucher  
Gerald and Dianne Brost  
Joan Brownstein  
Mary and Peter Budge  
Dave and Mary Burrill  
Richard and Barbara  
Burrock  
Kathy Busch  
Martin and Patricia Champion  
Stephanie Candon  
Margaret Casey  
Dennis and Mary Lou Caskey  
Dr. Robert and Mary  
Casper, Jr.  
Barbara Cassius  
Deborah Chapdelaine  
Steven Chirpich  
Jerome and Ursula  
Choromanski

Aileen O'Shea and Michael  
Cinque  
Chris Claude  
Rabbi Norman M Cohen  
Bill and Sally Colbert  
Daniel and Katherine  
Cole, Jr  
Alfred Colling  
Richard Collins  
George X. Connor  
Patricia Corcoran  
George and Peggy Crolick  
Thomas and Linda Cronin  
Timothy and Nancy Cronin  
James and Mary Crowley  
William and Mary Joan  
Culbertson  
Marlene and Roland Curtis  
Derek and Sherry Dautel  
Thomas and Bobbi Davis  
Edward and Sherry Ann  
Dayton  
Lou and Nan DeMars  
Michael and Debra Dieter  
Stephen and Linda Disch  
John Ditzler  
Twyla Staiger Dixon and  
Joseph Dixon  
George Dmowski, Jr.  
Cynthia Dodge  
Scott and Liz Dorn  
Greg and Stephanie Dosser  
Dorothy Dougherty  
Bridget Doyle  
Michael Doyle  
Fr. Philip F. Dreckman, S.J.  
Edward and Jo Anne Driscoll  
Kristin Dykstra  
James and Susan Eaton  
Ellen Emanuel  
Mary and Nicholas Eoloff  
Randy and Deborah Evans  
David and Lorraine Fait  
James and Margaret Favre  
Verneal and Ronald  
Feldhaus  
Peter and Lorraine Fischer  
Michael Fiterman  
Peter and Carolyn Flock  
Trish and Tom  
Flock-Johnson  
Larry and Toni Forsland  
Thomas and Pauline Foster  
Daniel J. and Dr. Janice D.  
Frederick  
Mark Fredrickson  
George Frey, Jr.  
Mary McEvoy and Terence  
Fruth  
Andy Gabler  
Lisa Pfiffner and Dennis  
Gamble  
Elizabeth Goodman and  
Herbert Gardner  
Edward and Joan Gartner  
Eugene and Joan Gennaro  
Phil and Dar Gerber  
Theodore and Eloise  
Giannoble  
Michael Giese

Christiane and Jean Pierre  
Goetstouwers  
Alan and Lynn Goldbloom  
Frances and Sue Gonyea  
Shannon Gray  
Michael Griffin  
Scott and Michele Hansen  
Sarah Harris  
Joseph Haschka  
Richard and Carolyn  
Hasselman  
Sarah Heidkamp  
Anne Heller  
Joan Mathieu and Jeffrey  
Helstrom  
Michael and Connie Herbert  
Angeline Barretta-Herman  
and W.R. Herman  
Anne Hickey Everett  
Martin and Jane Hilt  
John and Sharon Hite  
Charles and Renee Hoenig  
Kirk Hoffman  
Terry Hoffman  
William and Carol Hoffmann  
Bonnie O'Connor and Ron  
Hopfensperger  
Christine Solso and Robert  
Huber  
Gary and Bonnie Hugelback  
Eileen Hughes  
Bernice and Clarence Hynes  
Richard and Kathleen Jackson  
Paul Jaeger  
David and Sharon Jasper  
Jane Huerter and Richard  
Jeffries  
Mike Addy and Nancy  
Johnson  
Roxann and Jerry Johnson  
Thomas and Catherine  
Johnson  
James Jordan  
Jean Giltner and Patrick  
Joyce  
Thomas and Dolores Kalb  
Charles and Barbara Keffer  
Robert and Jean Kennedy  
Noi Keothammakhoun  
Roger and Jean King  
Page and Chris Kinner  
Anne and Warren Knapp  
Hank and Deb Koch  
Millie and Tim Kosiek  
Rita Koss  
Sandra Kratz  
Raymond Kroll  
Catherine Lampert  
Tom and Bonita Lang  
James and Esther Lannon  
Dr. Robert Larsen and Alice  
Brown Larsen  
Megan Kalina and Mark  
Lasswell  
Dr. Robert and Geraldine  
Lauer  
Dr. John Lawrow  
Mary and Edward LeClair  
Laura Brandon Lee and  
John Lee  
Peter and Janis Lee

Tom and Mary Gerry Lee  
Timothy and Kristen LeRoux  
Suzanne Veenhuis and  
Daniel Levitt  
Gregory and Mary Lewis  
Jessica Lewis  
Brittany Libbey  
Mark and Suzie Libbey  
Richard and Margaret Lidstad  
Sally Lofte  
David Allgeyer and  
Melinda Look  
Lawrence Loomis  
Jennifer and Aron  
Lopez-Herrera  
Jim and Sarah MacGillis  
Patrice Kloss and Robert  
Machalek  
Dick and Diane Magnuson  
Dennis and Kristina Malloy  
Thomas and Dorothy Maloney  
Thomas and Barbara Maple  
Annette Margarit  
Michele and Thomas Marrinan  
Bonnie and Jim Marten  
Anthony and Carolyn Martino  
William and Carole Martino  
Rebecca and John Mason  
Beth Harrison and Peter Mayer  
Dorothy Mayer  
Cynthia and John McArdell  
Richard and Jean McCampbell  
Ruth and Joseph McCarthy  
Marianne and Francis McGuinn  
Sr. Margaret McGuirk  
Tim McNulty  
Jeff and Gina Meacham  
Shirley and David Mellen  
Thomas and Rose Mary Meyer  
Terrence and Kathryn Miller  
Margaret Minegar  
Margene Mistelske  
John Montgomery  
William and Eileen Moore  
Timothy and Lynn Moratzka  
Janet Morgan  
Shym Morgan  
Thomas Moses  
Sidney and Rosalyn Mott  
Kelly Mulvehill  
Benjamin Murray  
Rosemary B. Naphin  
Robert and Geraldine Nehotte  
Joseph and Judith Neumeier  
James Nichols  
Gene Nord  
Ricardo and Elizabeth Norlin  
Kenneth W. O'Brien  
John and Martha O'Toole  
John and Audrey Panian  
Margaret Paterson  
Paige Patet  
Douglas and Barbara Paulson  
Tim and Holly Pechmann  
Ken Pellegrini  
Alice Pena  
Nancy Pereira  
Jayne Carey Peterson and  
Jerome Peterson  
Paul Hoffinger and  
Constance Peterson

## DONORS To \$499 (cont'd)

Calli and Nicholas Pettigrew  
John and Nancy Peyton  
Lawrence Pofundstein  
Shirley Polejewski  
David Power  
Roshan Rajkumar  
Robert and Margaret Regal  
Daniel and Margaret Reif  
Michael and Emily Reif  
James and Isabel Reynolds  
Daniel Riley  
Louis Robards  
Merle and Marguerite  
Robertson  
Krista Roering  
Bruce and Barbara Rossini  
William and Jane Rossini  
Laurence Ruggeri  
Frank and Betsy  
Russomanno  
Mary Ruzicka  
Bridget Ryan  
Patricia Ryan  
Kevin Sauter  
John Scanlan  
Doris and Stephen Schmaltz  
Mary Margaret and Phil  
Schmidt  
Stephen Schulz  
Fr. Robert Schwartz  
Jan and Ken Scott  
Regis and Ruth Seidenstricker  
Joseph Selvaggio  
James and Anne Marie  
Seward  
Mike and Judith Sexton  
Terry and Noreen  
Shaughnessy  
John Shekleton  
Jane and David Siegel  
Robert Silvagni  
Frank and Julie Smaron  
Michael Smeby  
Colleen and David Smith  
Judith Harmatys and  
Richard Snyder  
Albert Starshak  
Dale and Nancy State  
John and Cheryl Stearns  
Mary and Ernie Stelzer  
Cindy and John Stemper  
Paul and Debra Stoll  
Chris Sullivan  
John and Nancy Swanholm  
Hugh and Susanne Sweeney  
Rafael Tarrago  
Jon and Lea Theobald  
Len and Kathleen Thiede  
John and Carol Thompson  
Joseph Tombers  
Tracy Tredinnick  
Rodolfo G. Trujillo  
Erica Ulstrom  
Douglas Verbout  
Shirley Villone  
Margaret Volker  
Jody Warden  
Richard and Mary Jean Weigel  
Benjamin R. Welshons  
Patricia White

J.D. and Carol Jo Williams  
Thomas and Rose Winkels  
Michael and Pamela Wold  
Nicole Woodhouse  
Erin and Matt Woodward  
Phaedra Valente and Dave  
Young  
**Foundations,  
Corporations and  
Organizations**  
Anonymous (3)  
Advance Auto Parts, Inc.  
AgMotion, Inc  
Agnes M. Bendorf Charitable  
Trust  
Garrity Family Giving Fund of  
the American Endowment  
Foundation  
Americhip  
APi Group, Inc.  
John and Cindy Stemper  
Fund of the Ayco Charitable  
Foundation  
Basilica of Saint Mary  
Best Buy Children's Foundation  
Best Buy Co., Inc.  
Bieber Family Foundation  
Breast Center of Suburban  
Imaging  
Burr Oak Group, Inc.  
Casa Guadalupana  
Catholic Community  
Foundation Tuition  
Assistance Program  
Brian & Michelle Murray  
Charitable Fund of the  
Catholic Community  
Foundation  
Ellen & Scott Sayer Charitable  
Fund of the Catholic  
Community Foundation  
Eugene U. & Mary F. Frey  
Fund of the Catholic  
Community Foundation  
James & Mary Crowley Fund  
of the Catholic Community  
Foundation  
John & Jane McNeill Family  
Fund of the Catholic  
Community Foundation  
Michael & Pamela Wold Fund  
of the Catholic Community  
Foundation  
Catholic Youth Camp, Inc.  
Charles Schwab Foundation  
Cloverfields Foundation  
Commonweal Foundation, Inc.  
Commonweal Foundation  
Fund  
Community Shares of  
Minnesota  
Craig-Hallum Capital Group  
LLC  
Darren & Terry Jackson  
Foundation  
Deluxe Corporation  
Foundation  
Dorsey & Whitney LLP  
Dorsey and Whitney  
Foundation

Dougherty Family Foundation  
Edward and Karayn  
Cunnington Family Foundation  
Elizabeth C. Quinlan  
Foundation, Inc.  
Jack and Kate Helms Fund of  
the Fidelity Charitable  
Gift Fund  
McNulty Family Account of  
the Fidelity Charitable  
Gift Fund  
Richard and Mary Jean  
Weigel Donor-Advised  
Fund of Fidelity Charitable  
Gift Fund  
Fielding Nair International, LLC  
Frey Foundation  
General Mills Foundation  
General Mills, Inc.  
Gray, Plant, Mooty  
H.B. Fuller Company  
Foundation  
Harry Debes Family  
Foundation  
Holy Rosary Church  
Hubbard Broadcasting  
Foundation  
Hunt Electric Corporation  
IBM Employee Services  
Center  
Ignatian Associates  
Jerome J & Ursula  
Choromanski Family  
Foundation  
Jesusit Community at  
Creighton University  
John Steiner and Henry Shea  
Memorial Endowment Fund  
Joyce Preschool  
Kent Family Charitable Trust  
Kiwans Golden K Club  
of Edina  
KPMG LLP  
Larkin Hoffman Daly &  
Lindgren Ltd Foundation  
Lazard Middle Market,  
Minneapolis Office  
LeJeune Family Foundation  
LeJeune Steel Company  
Liberty Diversified  
International  
Lindquist & Venum PLLP  
Loonan Insurance  
Consulting, Inc.  
LRE Foundation  
M&I Marshall & Ilsley Bank  
Markoe House Jesuit  
Community  
Marquette Jesuit Associates,  
Inc.  
The Medtronic Foundation  
Medtronic Latin Cultures  
Network  
MicroGrants  
Brian Mark Family Fund of  
the Minneapolis Foundation  
Dick and Joyce H. McFarland  
Family Fund of the  
Minneapolis Foundation

Jim and Colleen Ryan  
Family Fund of the  
Minneapolis Foundation  
Terence Fruth and Mary  
McEvoy Family Fund of the  
Minneapolis Foundation  
Tim and Vicki Barzen  
Family Fund of the  
Minneapolis Foundation  
Oak Grove Commercial  
Mortgage  
OLG Men's Club  
Oppidan Investment  
Company  
Padilla Speer Beardsley  
Pajor Family Foundation  
Pax Christi Catholic  
Community  
Pfizer Foundation  
Carl and Eloise Pohlad Family  
Foundation  
PricewaterhouseCoopers LLP  
Prudential Foundation  
Quality Circuits, Inc.  
Razoo Foundation  
Richard E. Brooks and Patricia  
Brooks Donor Advised Fund  
of the Renaissance Charitable  
Foundation Inc.  
Residential Mortgage Group  
Riverway Foundation  
Robins, Kaplan,  
Miller & Ciresi L.L.P.  
Charitable Foundation  
Ryan Companies US, Inc  
M. George and Gloria V.  
Allen Fund of the Saint Paul  
Foundation  
Rueb Family Fund of the Saint  
Paul Foundation  
Schatz Real Estate Group  
Schwab Charitable Fund  
Shamrock Foundation  
Sisters of St Joseph of  
Medaille  
SPS Commerce, Inc.  
Target-Take Charge  
of Education  
The Murray Institute  
Thomson Reuters  
Thrivent Financial for  
Lutherans Foundation  
Truist  
United Way  
United Way of Metropolitan  
Chicago  
Ducar Family Charitable Gift  
Fund of the Vanguard  
Charitable Endowment  
Program  
Visitation Monastery of  
Minneapolis  
Walter & Leona Schmitt  
Family Foundation  
Wayzata Rotary Club  
Wells Fargo Foundation  
Wells Fargo U.S. Corporate  
Banking  
Wisconsin Province of the  
Society of Jesus

## TRIBUTES

**The following people generously gave to Cristo Rey Jesuit High School in honor of friends, loved ones, and other members of our community.**

In honor of Pam Albertson  
Jessica Cass

In memory of Mary Victoria Albrecht  
Theodore and Mary Albrecht

In honor of Asha Ali  
Margaret Minegar

In honor of Mohamed Ali  
Margaret Minegar

In honor of Betty Andrews  
Bill and Sally Colbert

In honor of Van der Auwera, SJ  
Christiane and Jean Pierre Goetstouwers

In honor of James Bakken  
Lars and Marilyn Bakken

In honor of Jeffrey and Maria Bakken  
Lars and Marilyn Bakken

In honor of Lars and Sharon Bakken  
Lars and Marilyn Bakken

In memory of Franke Burke, SJ  
Margaret King and James Bangert

In honor of Lorraine Breitenbucher  
Mary Margaret and Phil Schmidt

In honor of John E. Brooks  
William Kane, MD, Ph.D.

In honor of the Champion '61 Class Reunion  
James Moynihan

In memory of Pat Clancy  
Robert and Jean Kennedy

In honor of the Cristo Rey Jesuit High School Class of 2011  
Visitation Monastery of Minneapolis  
Pajor Family

In honor of Cristo Rey Jesuit High School Faculty & Staff  
Mark and Teresa Fleischhacker

In honor of Cristo Rey Jesuit High School's Visit to Bet Shalom  
Rabbi Norman M. Cohen

In honor of Eric and Mickey Curran-Bakken  
Lars and Marilyn Bakken

In honor of Kristine and Michael Daly  
Lars and Marilyn Bakken

In honor of Khalin Dodge  
Cynthia Dodge

In honor of Rhiana Dodge  
Cynthia Dodge

In honor of Mary and Ernie Dorn  
Scott and Liz Dorn

In memory of Joe and Victoria Fleischhacker  
Gerald and Katherine Roehl

In honor of Matthew Franke  
Maggie Lockner Franke

In honor of Bill Gabler on Father's Day  
Andy Gabler  
Barbara Gabler

In memory of George and Mary Gamble  
Lisa Pfiffner and Dennis Gamble

In honor of the local office Chairman's Award winner, Anton Gorleski  
KPMG LLP

In honor of Fr. David Haschka, S.J.  
Gloria and George Allen  
Daniel and Katherine Cole, Jr.  
Benjamin Murray  
Daniel Riley

In memory of Ed and Lucille Hasselman  
Richard and Carolyn Hasselman

In memory of Josephine Hornung  
Joseph Haschka

In honor of Julie and David Johnson  
Lars and Marilyn Bakken

In honor of Mary Ellen Jordan  
Theresa Sullivan

In memory of Leonard Kosiek  
Carol Kosiek  
Millie and Tim Kosiek

In memory of Ben M. Kozikowski, MD  
Mark and Tami Kozikowski

In memory of Ed Lucas  
Theodore and Eloise Giannoble  
Betty Lucas

In honor of Kiara Machuca  
Jean Giltner and Patrick Joyce

In honor of Kristina Malloy  
Dennis Malloy

In memory of Verna Mae Manatt  
Michelle Manatt

In honor of Martha McCampbell  
Richard and Jean McCampbell

In memory of Ruth McGuinn  
Marianne and Francis McGuinn

In honor of John McNeill  
Lou and Nan DeMars

In memory of Albert Norland and Gertrude LaMar  
Gary and Bonnie Hugelback

In honor of the Patet Family  
Paige Patet

In honor of the poor  
John Scanlan

In memory of Casey Quinn  
Patricia Ryan

In memory of Bernadette Rossini  
Dennis and Jerrice Barrett  
Arthur Boylan  
Joan Brownstein  
William and Mary Joan Culbertson  
Sandra Kratz  
Raymond Kroll  
Ricardo and Elizabeth Norlin  
Nancy Pereira  
Daniel and Margaret Reif  
Bruce and Barbara Rossini  
William and Jane Rossini  
Brian and Kathy Short  
Dale and Nancy State

In memory of Jim Ryan  
William Bieber  
Patricia and Dick Brooks  
Molly and Michael Carson  
Rick Collins  
George and Peggy Crolick  
Michael and Kathleen Dougherty  
Jean Giltner and Patrick Joyce  
Tom and Bonita Lang  
Tom and Mary Gerry Lee  
Anthony and Carolyn Martino  
Sidney and Rosalyn Mott  
Colin Ryan  
Ryan Companies  
Samuel and Cecilia Salas  
Warren and Mary Lynn Staley

In memory of John "Jake" Rydel  
Benjamin R. Welshons

In honor of Stephen Schulz  
Storrow Sommer

In honor of Ravon Smith  
Margaret Minegar

In honor of Fr. Sthokal, SJ  
Wayne Dirkman

In honor of Tess Sullivan  
James and Mary Ellen Jordan

In honor of Len Thiede  
David Power

In honor of Myles Wendt  
Margaret Minegar

In memory of Samuel Young  
Phaedra Valente and Dave Young

We have made every effort to include all who have contributed funding, services and materials. We sincerely regret any inadvertent omissions or errors. Please contact us if you discover an error.

## IN KIND DONATIONS

Advance Auto Parts, Inc.  
 Jack and Joan Barrett  
 Rosemary Barry  
 Jim Bartholomew  
 Niki Carlson  
 Jessica Cass  
 Joseph Claus and  
 Martha Conway  
 George Dmowski, Jr.  
 Dorsey & Whitney LLP

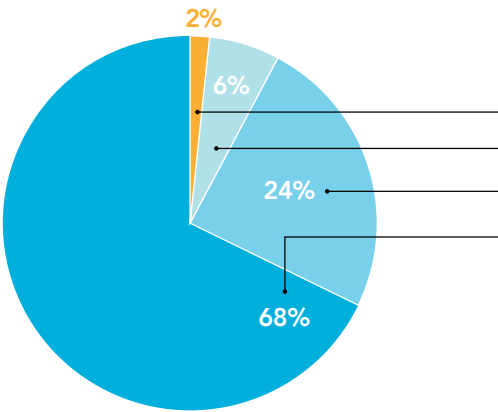
Excelen Center for Bone  
 and Joint Research and  
 Education  
 David and Helen Fitzgerald  
 Joni Frederick  
 Frey Foundation  
 Linda Henderson  
 Charles and Renee Hoenig  
 Mary Kath  
 Dick and Diane Magnuson

Minneapolis Central Library  
 Peggy Moore  
 Jacqueline Mosio  
 Kathy Niska  
 Oppidan Investment  
 Company  
 Tish and Richard Osborn  
 Patricia Ryan  
 Ryan Companies US, Inc

The Catholic Youth  
 Bible Grant Committee of  
 Saint Mary's Press  
 Samuel and Cecilia Salas  
 San Miguel Middle School  
 Ed and Mireille Sarquis  
 Gary and Pat Sauer  
 Richard Stadtherr  
 Thomson Reuters

## Consolidated Statement of Activities - year ended June 30, 2011

An independent audit of the school's finances was performed for the year ended June 30, 2011.  
 For a copy of the complete audited financial statements, please contact Barbara Diekmann 612-545-9707

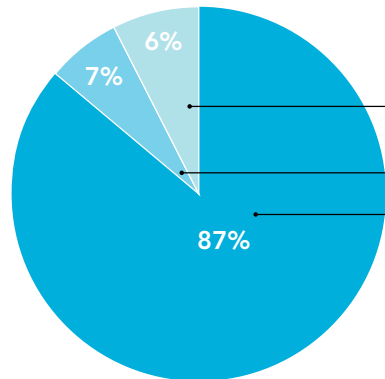


### Revenues

Family Contributions	\$94,360
Other Revenue	330,448
Hire 4Ed Sponsorships	1,317,562
Contributions and Operation Pledges*	3,647,595

**\$5,389,965**

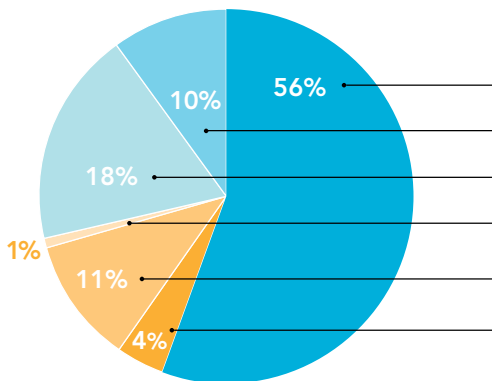
\*Includes \$1.2 Million in pledges to be received in future years



### Expenses by function

General and Administrative	\$283,031
Fundraising	328,563
Program Services	3,875,261

**\$4,486,855**



### Expenses by category

Salaries and Benefits	\$2,504,992
Program Support	441,310
Occupancy and Depreciation	830,040
Extra-Curricular Activities	38,916
Student Meals and Transportation	488,513
Curriculum and Technology	183,084

**\$4,486,855**

# CRISTO REY

## JESUIT HIGH SCHOOL

### Board of Directors

**Chairman** Mr. Brian Murray  
CFO Ryan Companies US, Inc.

**Vice Chair** Mr. Samuel Salas  
Headmaster Emeritus, Breck School

**Secretary** Mr. Girard P. Miller  
Partner, Fulbright & Jaworski L.L.P.

**Treasurer** Mr. Michael F. McFadden  
Co-CEO, Lazard Middle Market

**President** Rev. Timothy T. Manatt, S.J.  
Cristo Rey Jesuit High School

Ms. Kathy Boone  
Education Director, Groves Academy

Rev. Eugene M. Dutkiewicz, S.J.  
Treasurer Emeritus  
Wisconsin Province of the  
Society of Jesus

Mr. Darren R. Jackson  
President and CEO  
Advance Auto Parts Inc.

Mr. Timothy Kosiek  
Partner, Baker Tilly Virchow Krause, LLP

Rev. Patrick M. McCorkell, S.J.  
Director, Jesuit Retreat House

Mr. Stephen P. Lucke  
Partner, Dorsey & Whitney LLP

Rev. Thomas J. Merkel, S.J.  
President, Creighton Preparatory School

Ms. Rita Johnson-Mills  
Senior Vice-President, Americhoice,  
United Health Group

Mr. Benjamin J. Peyton

Mr. Robert C. Pohlad  
Principal, Pohlad Companies

Ms. Colleen Ryan  
Community Volunteer

Mr. Ed Sarquis  
Regional Manager  
US Bank Home Mortgage

### Administration

**Fr. Tim Manatt, S.J.**  
President

**Jeb Myers**  
Principal

**Barbara Diekmann**  
Director of Business Activities

**Bob Elfstrand**  
Director of Development

**Meg Brudney**  
Executive Director of Hire4Ed

**Annemarie Hansen**  
Director of Admissions and Communications



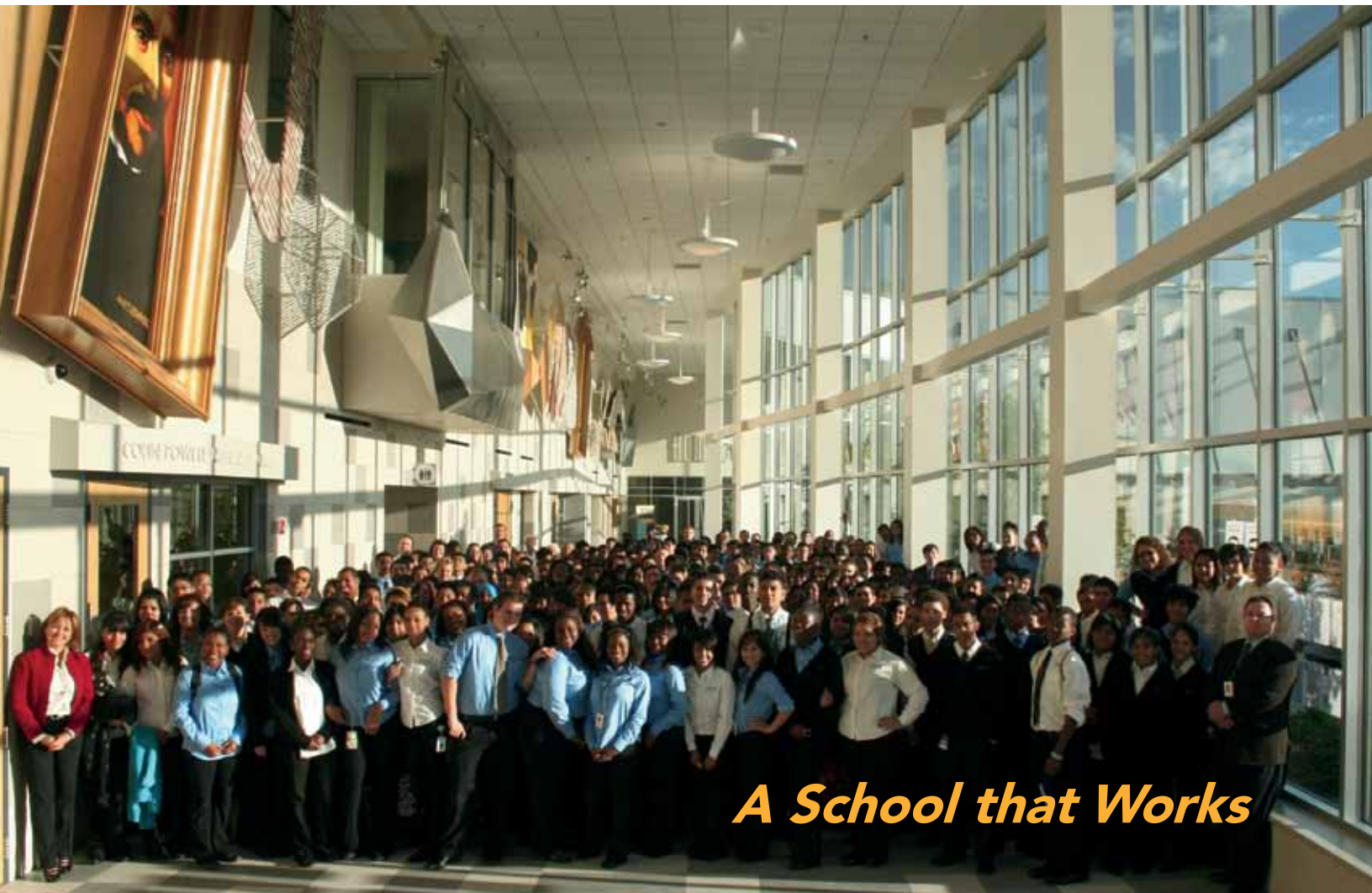
We would like to thank those who contributed time and talent to make this annual report possible especially Adrienne Greer Foley, Trudy Marshall, Susan Peterson, and Shapco Printing.



# CRISTO REY

JESUIT HIGH SCHOOL

2924 4th AVENUE SOUTH  
MINNEAPOLIS, MN 55408



***A School that Works***